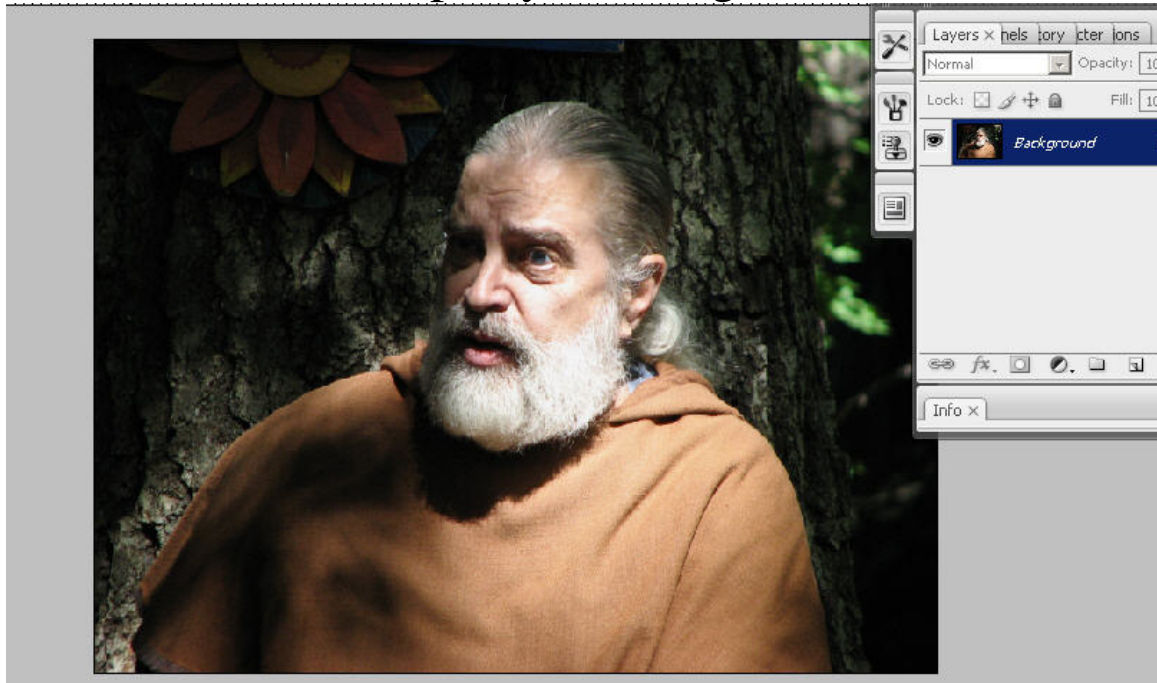
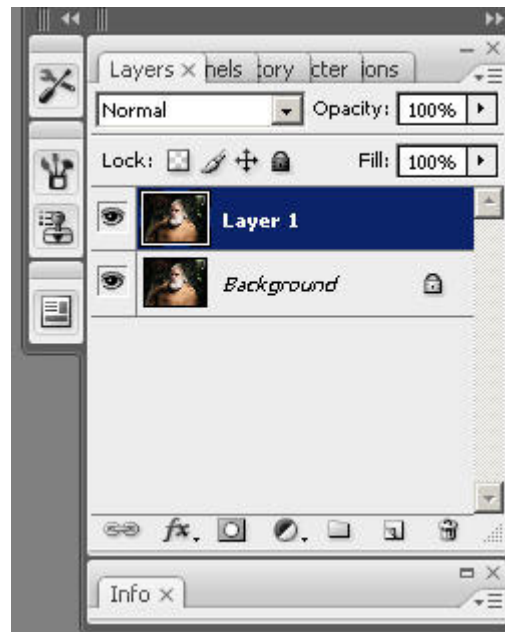


# Shadow-Highlights-Smart Filters

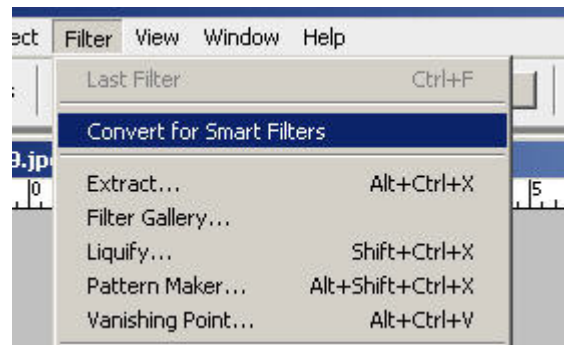
1) open your image



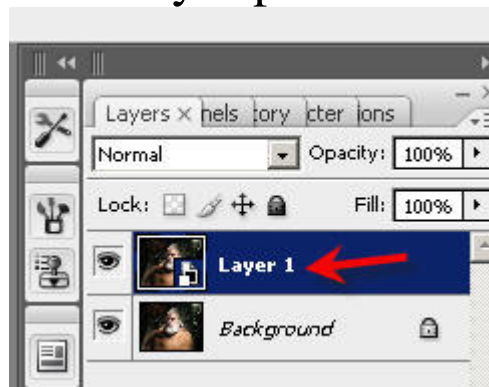
2) Duplicate your layer



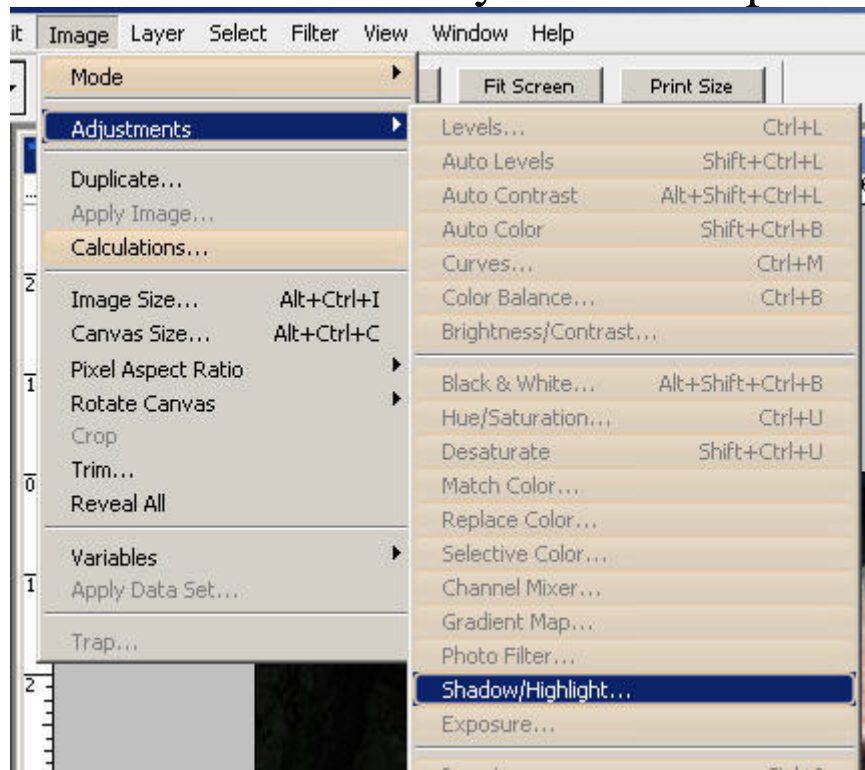
3) Go to Filters > Convert for smart filters



Here is what the layer palette looks like now.



4) go to Image > Adjustments > Shadow/Highlights  
it will be the only available option



5) You now have a mask under the smart filter so essentially you have been able to use the adjustment as if it were an actual adjustment layer.

